

## BB1509 Series

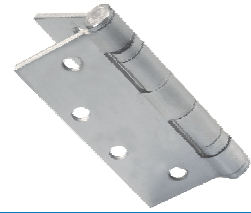
## Hinges

### Hinges

HA-BB1509-26D-4 1/2 X4	ball bearing, satin chrome
HA-BB1509-26D-4 1/2 X4-NRP	ball bearing, non removable pin, satin chrome
HA-BB1509-26D-4 1/2 X41/2	ball bearing, satin chrome

Solid steel construction

### Hinges



## STOREFRONT HARDWARE

### Keyed Mortise Cylinder

HA-984-26D-SC	1", Schlage C Kwy/per pair, satin chrome
HA-984-26D-WE	1", Weiser Kwy/per pair, satin chrome

Solid brass construction  
Designed to meet most manufacturers depth and spacing  
Supplied with Adams Rite cam

### Keyed Mortise Cylinder



### Thumbturn Mortise Cylinder

HA-101TK	satin chrome
----------	--------------

Solid brass construction  
Supplied with Adams Rite cam

### Thumbturn Mortise Cylinder



### Rim Cylinders

HA-5010-WR-3	Weiser kwy, brass
HA-5010-WR-26D	Weiser kwy, satin chrome
HA-5010-YA-3	Yale kwy, brass
HA-5010-YA-26D	Yale Kwy, satin chrome

Solid brass construction  
Designed to meet most manufacturers depth and spacing

### Rim Cylinders



### Dummy Mortise Cylinder

HA-983-26D	1", satin chrome
------------	------------------

Precision crafted, extruded solid brass

### Dummy Mortise Cylinder



### Mortise & Rim Cylinder Hole Covers

HA-GK-ADD1A	aluminum door hole filler disks, aluminum
HA-GK-ADD1D	aluminum door hole filler disks, durodonic
HA-GK-ADD2A	door hole filler disks with threaded rod, aluminum
HA-GK-ADD2D	door hole filler disks with threaded rod, durodonic

1 5/8 diameter,  
Conceals holes, with integrity to mount new hardware on

### Mortise & Rim Cylinder Hole Covers



### Mortise Cylinder Hardened Steel Guard Ring

HA-CG3-26D	satin chrome
------------	--------------

### Mortise Cylinder Hardened Steel Guard Ring

